

MONTHLY MEMBERSHIP PROGRESS REPORT

LOCATION INDIA

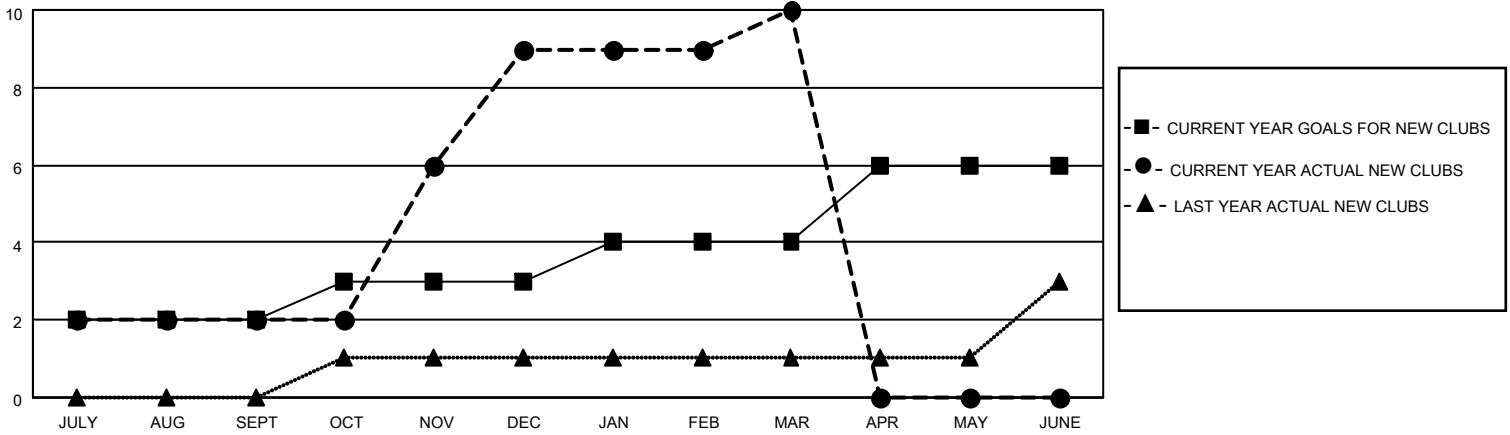
District 318 E

Results as of: 3/31/2021

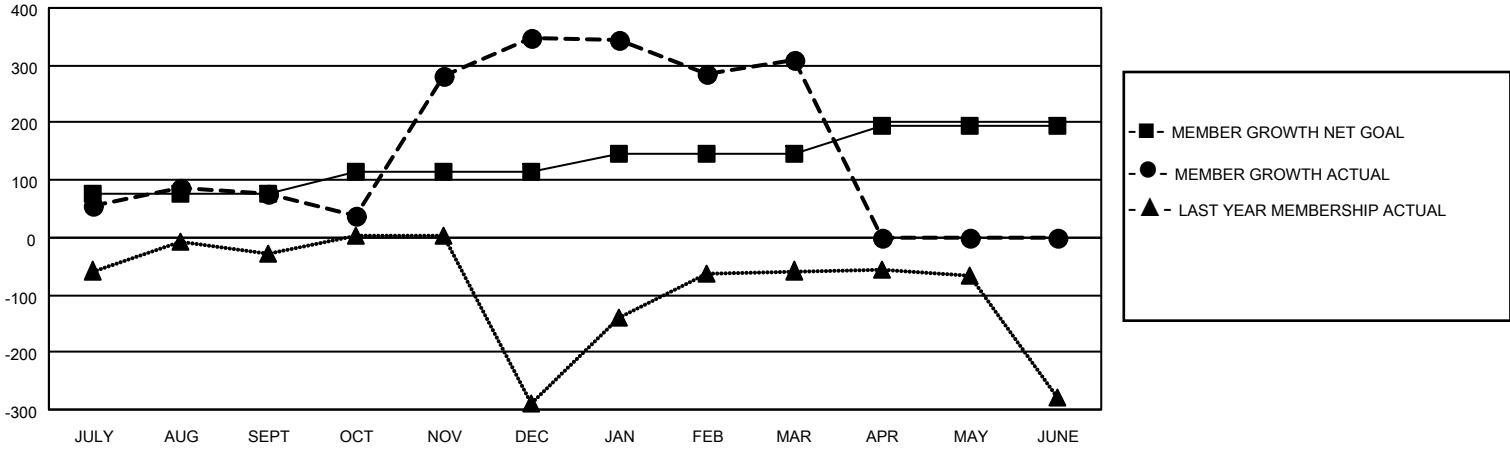
Clubs			
RESULTS FOR 2020-2021			
QUARTER	NEW CLUB GOAL	NEW CLUBS	DROPPED CLUBS
JULY/AUG/SEPT	2	2	0
OCT/NOV/DEC	1	7	0
JAN/FEB/MAR	1	1	4
APR/MAY/JUNE	2	0	0

Members			
RESULTS FOR 2020-2021			
QUARTER	MEMBER GROWTH NET GOAL	MEMBER GROWTH ACTUAL	DROPPED MEMBERS ACTUAL (including transfers)
JULY/AUG/SEPT	75	196	112
OCT/NOV/DEC	40	584	299
JAN/FEB/MAR	30	118	151
APR/MAY/JUNE	50	0	0

GOALS AND ACTUAL NEW CLUBS CUMULATIVE



GOALS AND ACTUAL MEMBERS CUMULATIVE



DROPPED CLUBS: 4

96 CLUBS OF 151 ADDED 1 OR MORE NEW MEMBERS

GENDER DISTRIBUTION

MALE 4,564 (77.12%)
FEMALE 1,354 (22.88%)

DROPPED MEMBERS

[CLICK HERE FOR CUMULATIVE MEMBERSHIP DATA](#)

DECEASED	16
CLUB CANCELLED	81
OTHER	465
TOTAL	562

TOTAL FAMILY UNIT MEMBERS	2,349
FAMILY MEMBERS PAYING HALF DUES	1,228